



WWW.EIS-GROUP.ORG



**ENERGY & INDUSTRIAL SOLUTIONS FZC**

**شركة الحلول للطاقة والصناعة ذ.م.م.**

**COMPANY PROFILE**



# OUR PRODUCTS



ENERGY & INDUSTRIAL SOLUTIONS FZC

شركة الحلول للطاقة والصناعة ذ.م.م.

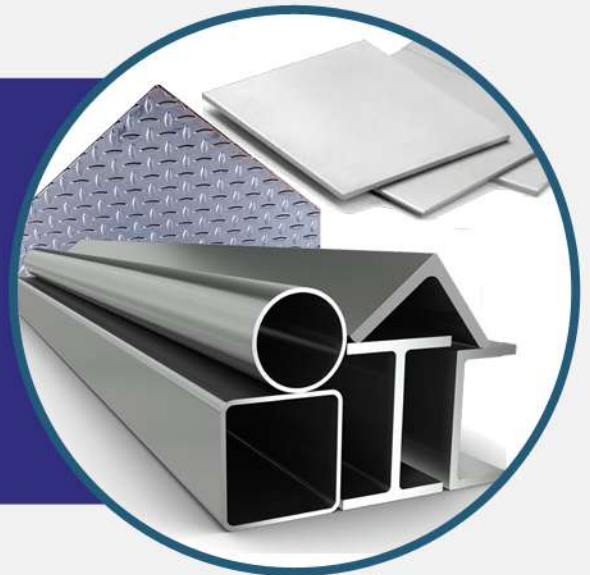


## 01

### Pipes & Fittings (CARBON Steel & Stainless Steel)

## 02

### Structural Steel (PLATES, Angles, Hollow Section, Beams, Checkered Plates, Flat Bars)



## 03

### Fasteners

We specialize in supply of High Performance Fasteners like Stud Bolts, Hexagonal Bolts, Threaded Rods in range of different Sizes, Grades and materials like Stainless Steel, Carbon Steel and Special Alloys.



[WWW.EIS-GROUP.ORG](http://WWW.EIS-GROUP.ORG)

CALL US  
**+971 65574688**

 [eisfzc@eisfzc.ae](mailto:eisfzc@eisfzc.ae)

# OUR PRODUCTS



ENERGY & INDUSTRIAL SOLUTIONS FZC

شركة الحلول للطاقة والصناعة ذ.م.م.



## 04 Gratings

We do stock and Supply Electroformed Grating Panels, Cut to Size or Custom Fabricated Electro Forged Gratings, Circular Gratings, Heavy Duty Gully Gratings and Stair Treads with Required Fixing Clamps. The Gratings can be supplied in self Color, Hot Dip Galvanized and Electro Polished Surface finish.

Gratings are available in both Plain as well as Serrated Bearing Bars in different sizes.

Gratings can be supplies in Mild Steel, Stainless Steel, GRP, FRP and Aluminium

Along with Gratings, we can supply Handrail systems used to guard Platforms, Stairways, Walkways, Towers, Danger Zones and other Areas where safety is prime concern.

## 05 West Coast Engineering

Aluminium Manhole Access Covers with Frame, Aluminium Ladder with Safety Cage and Industrial Aluminium Handrail

Heavy Duty Platforms fabricated out of Composite Section made of Extruded Aluminium Alloy conforming to AA 6063 T6 conforms to BS 1474/EN 75. All Aluminium H/D Covers will be removable Type, supported on a Aluminium Alloy Kerb Angles on Periphery of Entire cover of the Pit. All Kerb Angles to be provided with EPDM Rubber Strips to prevent Leakage of Gas escaping from Chambers.



[WWW.EIS-GROUP.ORG](http://WWW.EIS-GROUP.ORG)

CALL US  
**+971 65574688**

 [eisfzc@eisfzc.ae](mailto:eisfzc@eisfzc.ae)



## 06 MACOGA Expansion Joints

**MACOGA** is pioneers in manufacturing of Expansion Joints both in Metal Expansions Joints and Rubber Expansion Joints.

Expansion Joints are used as components in Piping or as parts of Pressure Vessels. An expansion Joint is an apparatus containing one or more Bellows used to absorb dimensional changes such as those caused by Thermal Expansion or Contraction of a pipeline, Duct or Vessel and to Absorb Vibrations caused by Engines, Pumps, Motors, etc.

The bellows are Flexible Element consisting of one or more Corrugations and the End tangents. A corrugation is the flexible unit of a bellow and end tangents are Straight Un-Corrugated Portion at the ends of Bellows. While design of the Expansion Joints apart from Flexibility of the Bellows other Operating Parameters such as Pressure, Temperature & Chemical Resistance to fluid Passing through them are taken into Account.

There are different types and Sizes of Expansion Joints Available in both Metal Bellows and Rubber Bellows.

## 07 RADOLID Bolt Cap

**RADOLID** - It's a modern company and an international player which has specialized in the development and production of the Screw Protective Caps for last 50 Years.

All RADOLID protective caps have a sealing Lip that seals the system outwardly. It has a Circular Cross Section which allows to minimize residual stress generated during the production process so that the Caps do not tear or Split, even where Large Nut & bolt head tolerances are involved.

RADOLID type SW (Locking Cap), DSW , ESW, HSW (High Locking Caps) locking Caps have a locking edge on the lower inner edge this engages under the Chamfer of the Nuts ensuring a firm and secure connection of the protective cap.

Protective Groove forms a circumferential protective Chamber between the Locking edge and the sealing lip. Penetrating moisture is collected and distributed here, thus preventing it from penetrating directly into the interior of the cap.



# OUR PRODUCTS



ENERGY & INDUSTRIAL SOLUTIONS FZC

شركة الحلول للطاقة والصناعة ذ.م.م.

# rada

Rada is one of the UK's leading providers of commercial washroom controls. It has been at the forefront of designing and manufacturing water controls and washroom products for more than 80 years. It is recognized for its industry leading design in taps and showers and is a Red Dot Design Award winner. Its products provide excellent form and function. They are designed to be attractive and easy to use while keeping users safe, helping to prevent waterborne infections, and conserving resources. Rada is pioneering smart technology in its washroom controls for connectivity with smart buildings and the internet of things.

Rada is part of Kohler Company, the international bathroom and kitchen design company.



## RADA SAFETHERM THERMOSTATIC CLINICAL TAP

TMV3 approved panel mounted, thermostatic mixer tap featuring Insutech+ technology. Long lever sequential operation, supplied complete with service-free cartridge, check valves, strainers and isolating ball valves. WRAS and TMV3 approved

## RADA ACU-T3 DMV

Concealed digital mixing valve for washbasins, offering programmable maximum, minimum and default temperatures, duty flush and thermal disinfection with temperature logging and data logging capabilities. Supplied complete with programmable software, power supply, isolators, non return valves and filters. Panel mounted control panel offering access to valve, featuring infra-red non touch controls for temperature adjustment and programming. Panel mounted spout offering user activated on/off control or timed flow. WRAS and TMV3 approved



## RADA THERMOTAP - 3 THERMOSTATIC MIXING TAP

Basin mounted thermostatic mixing tap with short or long lever control, and offering single sequential control from cold through to a pre-settable maximum temperature. Taps are supplied complete with flexible / copper supply tails, check valves, isolators and strainers. WRAS and TMV3 approved

## RADA V12 CONCEALED THERMOSTATIC SHOWER VALVE

Built-in thermostatic shower valve certified to TMV3 performance standard and featuring integral isolating ball valves. Sequential single lever operation from cold through to warm. Includes service-free cartridge, check valves, filters and optional flow regulators. WRAS and TMV3 approved



[WWW.EIS-GROUP.ORG](http://WWW.EIS-GROUP.ORG)

CALL US  
**+971 65574688**

[eisfzc@eisfzc.ae](mailto:eisfzc@eisfzc.ae)

# OUR PRODUCTS



ENERGY & INDUSTRIAL SOLUTIONS FZC

شركة الحلول للطاقة والصناعة ذ.م.م.



## RADA V12 EXPOSED THERMOSTATIC SHOWER VALVE

Surface mounted thermostatic shower valve certified to TMV3 performance. Sequential single lever operation from cold through to warm. Includes service-free cartridge, filters and optional flow regulators. WRAS and TMV3 approved.

## RADA INTELLIGENT CARE CLINICAL TAPS

Intelligent thermostatic basin tap with non-touch flow (IR) and temperature (capacitive) controls, smooth bore copper outlet pipe with open bore flow insert, check valve/filter unit, pex lined hoses, programmable temperatures, run time, automated blend duty flush and cold flush, thermal disinfection, integral 12 month data log and optional connection to building network systems.



## RADA INTELLIGENT CARE CLINICAL TAPS

Intelligent thermostatic panel mount tap with non-touch flow (IR) and temperature (capacitive) controls, smooth bore copper outlet pipe with open bore flow insert, check valve/filter unit, programmable temperatures, run time, automated blend duty flush and cold flush, thermal disinfection, integral 12 month data log and optional connection to building network systems.

## MEYNELL 15/3 THERMOSTATIC MIXING VALVE

A 1/2" point of use, thermostatic mixing valve, supplied with integral check valves and strainers. Ideal for wash basin & shower mixers



## 08 HOLLKO Bridge Drain Gully:

Bridge Drainage systems have to match the special features of Bridge construction such as reinforced Concrete Bridges and special construction measures such as timed shifting when constructing Large Steel bridges.

### Our Gullies include:

1. Gullies and Gully tops for Bridge Drainage and Refurbishment upto load Class D400
2. Gullies for Reinforced Concrete Bridges systems, 500x500mm in Cast Iron
3. Gullies for Steel Bridges, 260x500mm
4. Cast Iron Gullies for Gravel Bridges.

[WWW.EIS-GROUP.ORG](http://WWW.EIS-GROUP.ORG)

CALL US  
**+971 65574688**

[eisfzc@eisfzc.ae](mailto:eisfzc@eisfzc.ae)



## 09 INDANA Flange Guards

Flange Guards also known as Flange Spray Shields are designed to provide protection from Spray Outs or Hazardous body Splashes of Corrosive Fluids such as Acid, Oil or Steam. The basic advantage of Flange Guards are it protects against Mist formation so protection from Corrosion in return reduces the down time and Injuries by containing and limiting the Contact with Costly industrial Equipment.

**Different types of Flange Guards are:**

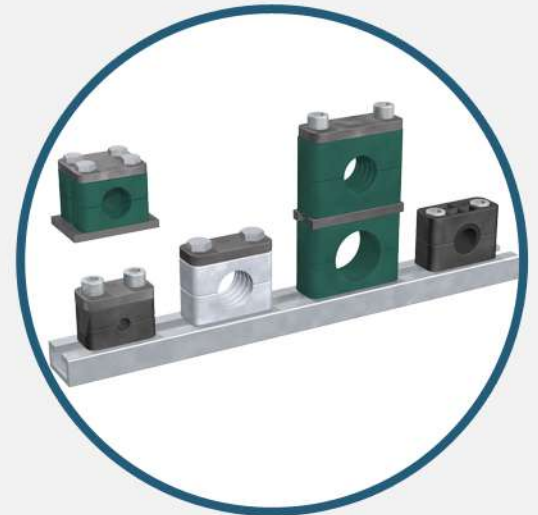
1. PP Flange Guard
2. PTFE Flange Guard
3. Stainless Steel Flange Guard
4. Clear Type Flange Guards
5. PP Box Type Flange Guards.

## 10 Stauff Clamps:

Clamps symbolize quick and easy as well as secure installations of Pipes, Tubes, Hoses, Cables and other Flexible and Rigid Components with Outside Diameters upto 1016mm

Their Vibration and noise Reducing features are appreciated as being an important Contribution to environmental protection and Occupational Health and safety. The processing of Fire Proof Clamp Body materials tested and approved according to several international Fire protection Standards.

Different types of Clamps in different range are available.



## 11 Borosilicate Glass Traps:

Borosilicate Glass Traps have been utilized in the Air Conditioning Industry and have found extensive use in Hospitals, Public Buildings and Industries. It has established itself as the ultimate System for the disposal of Condensate Waste.

**The basic advantages being:**

1. Easy Visual Inspection
2. Help prevent Legionella bacteria.
3. Self Cleaning, Smooth Non Porous surface.

# CONTACT US



ENERGY & INDUSTRIAL SOLUTIONS FZC

شركة الحلول للطاقة والصناعة ذ.م.م.

## Energy & Industrial Solutions FZC



**Address:**

Sharjah Airport International Free Zone  
(SAIF Zone). PB -120180, Sharjah, UAE



**Telephone Number:**

+9716 5574688



**Email ID:**

eisfzc@eisfzc.ae



**Website:**

www.eis-group.org

